



AMBIA-LINE and ORGA-LINE

Organization at its best

www.blum.com

 **blum**[®]



Beautifully organized drawers — throughout your home

- 4 Online configuration
- 6 Solutions for your home
- 8 The two sides of a kitchen

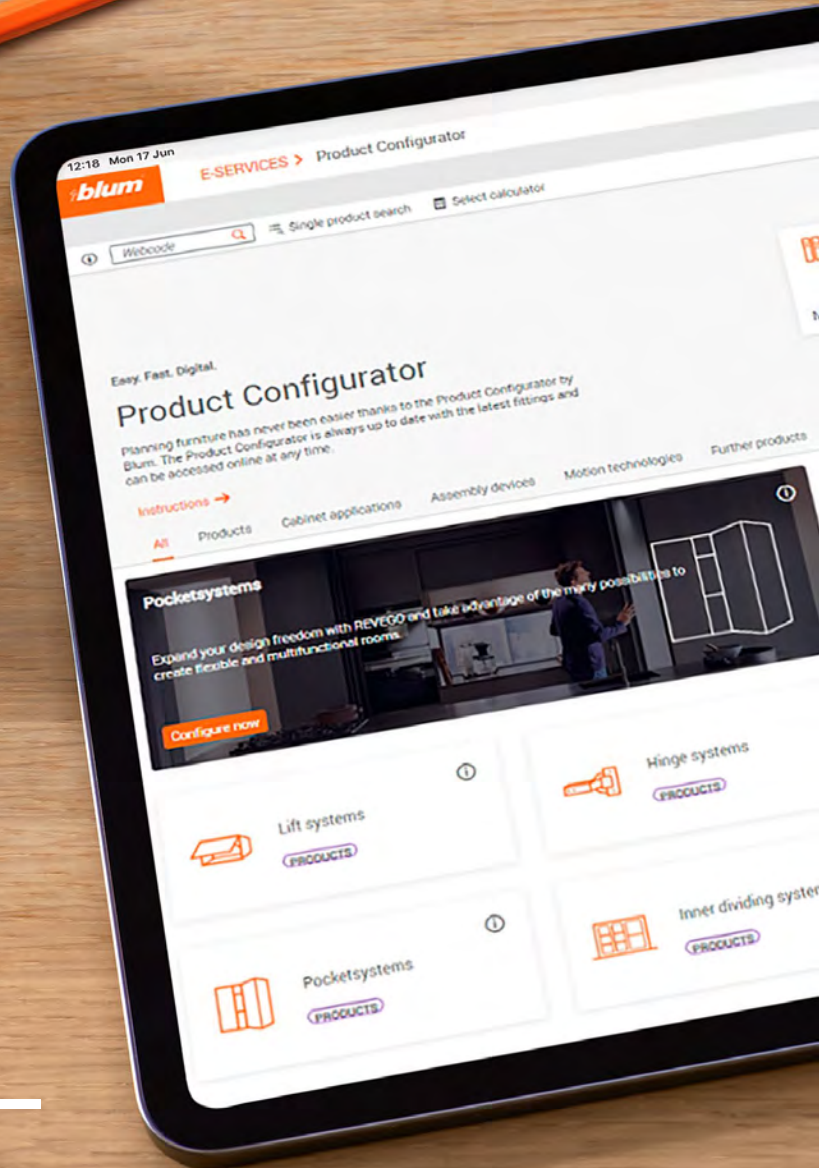
AMBIA-LINE

- 10 Effective in function — versatile in application
- 12 Ideas for your kitchen
- 22 Ideas throughout the home
- 26 Product range
- 28 Ordering information
- 32 Kitchen accessories

ORGA-LINE

- 36 Sets
- 38 Ordering information
- 50 Kitchen accessories
- 54 moving ideas

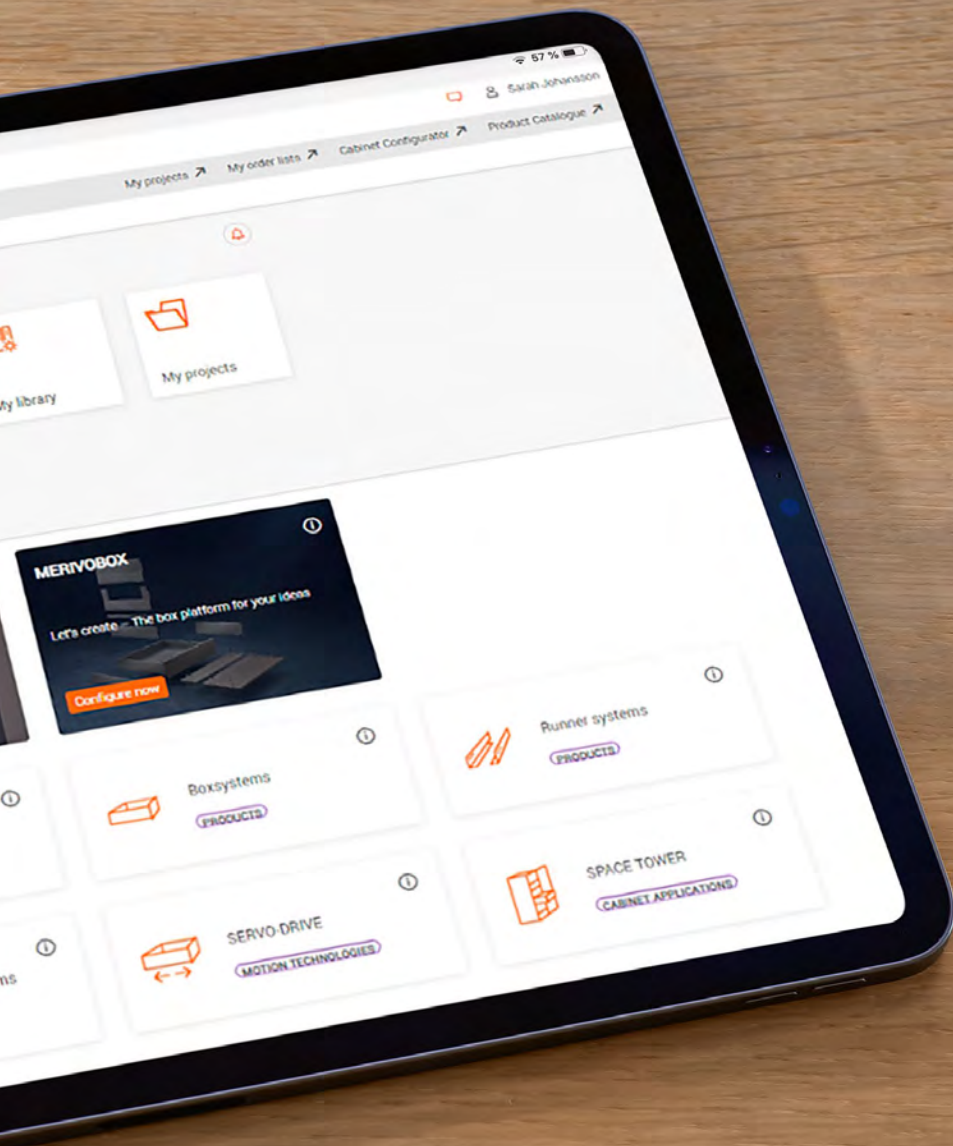
Online configuration — quick and easy



Our free Product Configurator simplifies the ordering process for ORGA-LINE and AMBIA-LINE. Using the web browser of your choice, enter the type of organization system you want and the width of your drawer, and it will instantly provide the number of organizers you need along with their part numbers.

Your advantages at a glance:

- Intuitive interface — quick and easy
- Online availability 24/7
- Product solutions and assembly information that are always up to date
- Error-free results — tested by Blum



Find out more about the Product
Configurator at:
www.blum.com/productconfigurator



**Ideas by Blum:
Solutions for
your home**

A kitchen can be both beautiful and functional.

A kitchen can be a stunning centerpiece in a home while also being highly functional. By incorporating smart design choices, such as ergonomic layouts, accessible storage solutions and high-quality hardware, you can create a space that not only looks beautiful but enhances everyday tasks.



Ergonomics

Everything is easy to access and clearly organized.



Storage space

Make full use of the storage space available.



Quality of motion

Cabinets are easy to open and close.



Design

Turn your creative ideas into reality.

The two sides of a kitchen

A kitchen has to work for everyday use, and functionality doesn't have to compromise style. Blum has been investigating the needs and requirements of kitchen users for years. Because of this research, we are continually coming up with new ideas to make modern kitchens even more functional.

Five zones for optimal workflows

Meal preparation and clean-up are regular routines in any kitchen. Simplify workflows by segmenting the kitchen into five zones. This will minimize distances and ensure everything is in its proper place, saving time and energy.



Consumables

Food is kept in the “consumables” zone. When planning this zone it's important to ensure that everything is within easy reach.



Non-consumables

The “non-consumables” zone is designed for flatware, dinnerware and glasses. Planning the dishwasher close by will enhance workflow.



Cleaning

This zone houses the dishwasher, sink, waste and recycling areas. Cleaning utensils and supplies should be kept here so that everything is readily available.



Preparation

All the utensils needed for preparing food are kept in this zone between “cooking” and “cleaning.” Drawers ensure that items are within easy reach and can be quickly placed on worktops.



Cooking

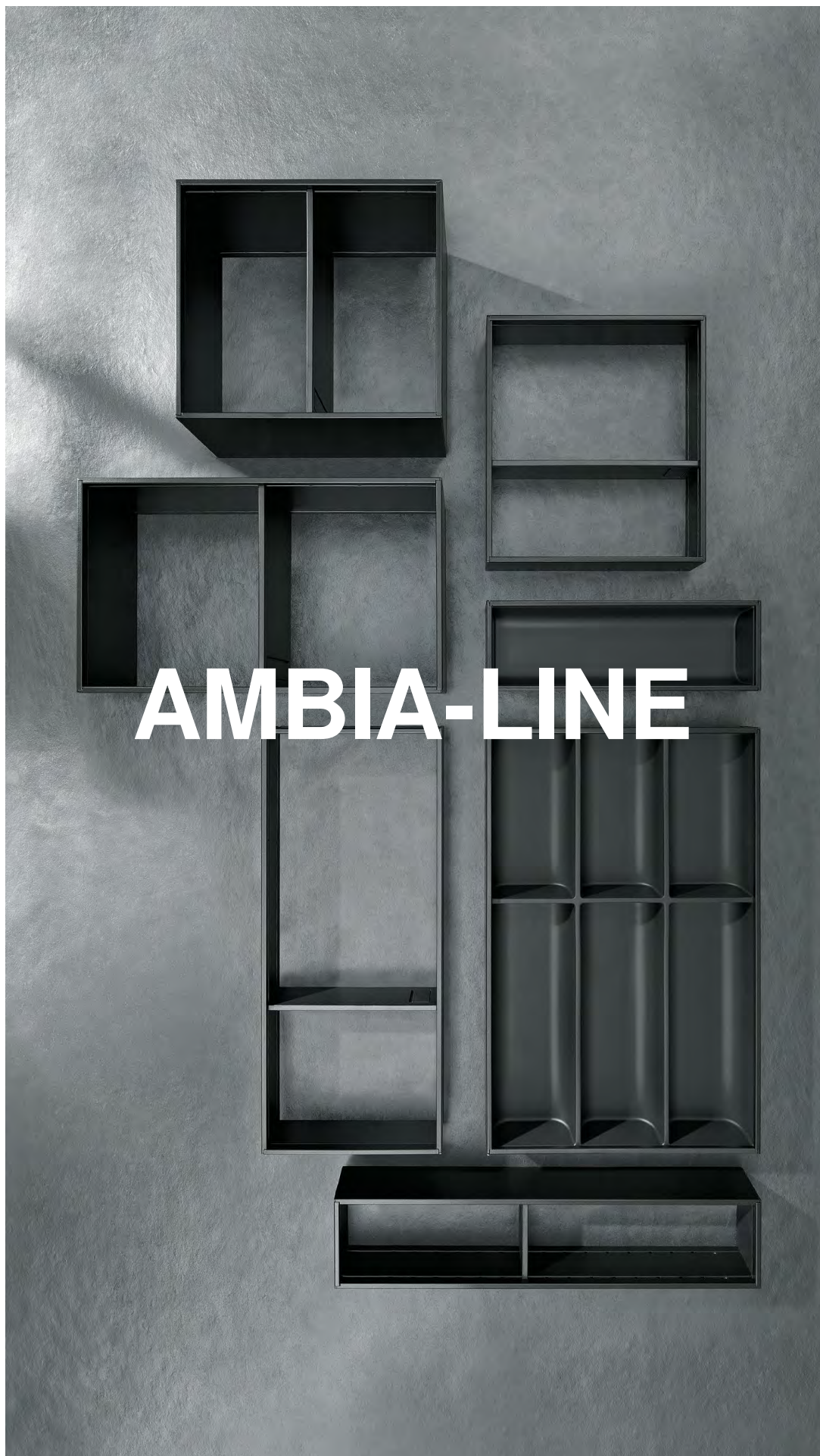
There should be enough space for pots, pans and cooking items right next to the cooktop.

Classic steel design

The sleek, powder-coated steel frames fit seamlessly into drawers offering both functionality and a stylish, modern appearance.



Orion gray (matte finish)



Effective in function — versatile in application

AMBIA-LINE gives you the freedom to tailor the contents of your drawers to your individual needs and to every type of storage item. They fit easily into drawers and are suitable for all living areas.



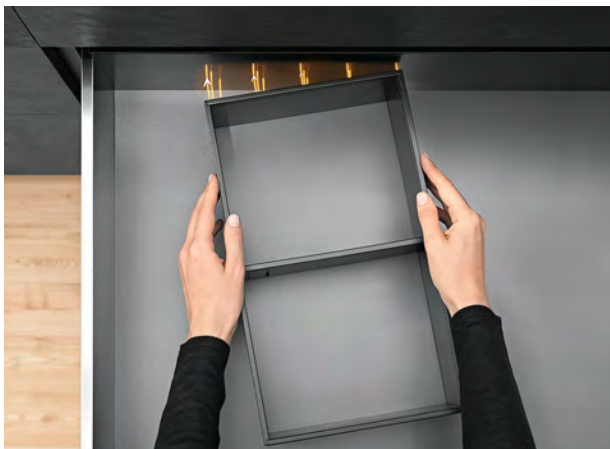
Elegant design

The minimalist design of AMBIA-LINE goes perfectly with the clean lines of LEGRABOX and MERIVOBX.



Adjustability

The flexible cross dividers can be easily adjusted to fit the size of the items being stored.



Versatility

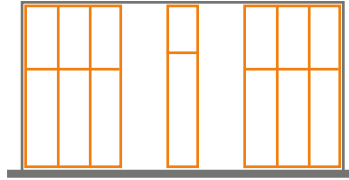
With the magnetic adapter plate, the frames can be positioned anywhere in the drawer.



AMBIA-LINE: Ideas for your kitchen







AMBIA-LINE for flatware

- Coated with soft touch, noise-dampening material, flatware is stored almost without making a sound.
- Flatware inserts and frames can be combined as needed.

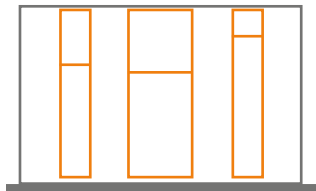


reddot award 2014
winner



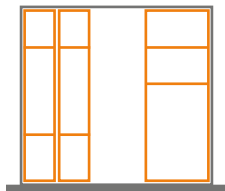
German
Design Award
SPECIAL
MENTION 2015

- Everything runs like clockwork because you have clear visibility of whisks, vegetable peelers and ladles.



A top-down view of a dark grey drawer filled with various objects organized into compartments. The items include stationery like pens, pencils, and scissors; craft supplies like thread spools and a loom; personal care items like soap and a hairbrush; and miscellaneous objects like a camera, a lollipop, and small boxes.

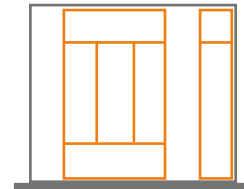
- Odds and ends are kept perfectly organized.
- Seldom-used items are exactly where they should be and ready for use.





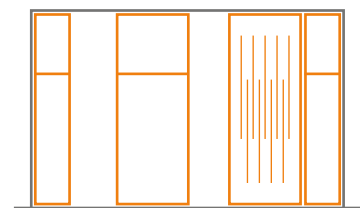
AMBIA-LINE for flatware

- The flatware insert beautifully organizes cutlery.
- The high-quality material can easily be cleaned with a damp cloth.



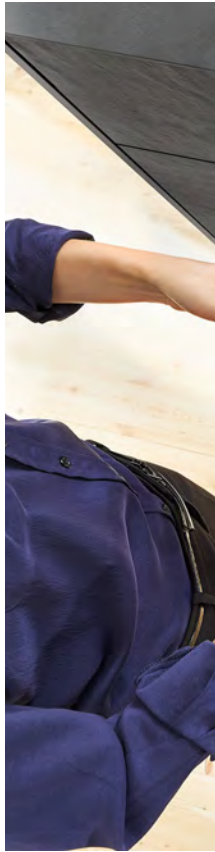
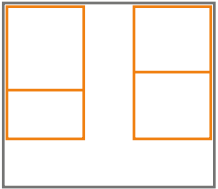
AMBIA-LINE knife holder

- The knife holder ensures secure storage of up to nine knives.
- High-quality nylon and anti-fingerprint stainless steel keep the sharp edges protected without dulling the blades.



AMBIA-LINE for food items

- The SPACE TOWER pantry unit keeps jars and cans of all sizes nice and tidy.
- The non-slip AMBIA-LINE frames also securely hold open bags of flour, sugar or rice.



AMBIA-LINE for plastic containers

- Instead of chaos, order and organization reign in the drawer.
- No more time wasted trying to match the right lid with the right container!





AMBIA-LINE for cleaning supplies

- The sink drawer makes full use of the storage space under the sink, which is often wasted. Supplies can be clearly organized.
- Detergents, sponges and brushes are kept exactly where they are needed.



AMBIA-LINE for waste separation

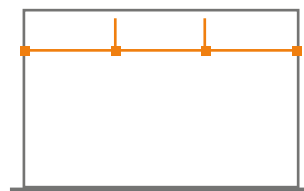
- Cleaning products are kept secure and separate from waste separation containers.
- The cross divider can be adjusted to suit different bottle sizes.





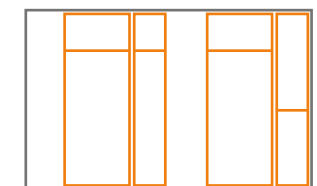
AMBIA-LINE for pots and lids

- The best place to store cookware is in the drawer close to the cooktop.
- The cross gallery keeps lids upright and within easy reach.



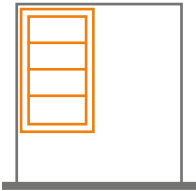
AMBIA-LINE for cooking utensils

- Wooden spoons, spatulas and whisks are always at your fingertips.
- The cross dividers can be adjusted to the length of the utensils.



AMBIA-LINE spice holder

- The spice holder securely holds containers of all shapes and sizes.
- They are held at an angle so you can easily read the labels.





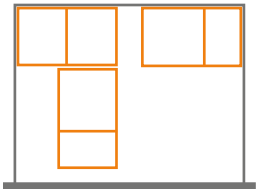
blumi



Ideas throughout
the home

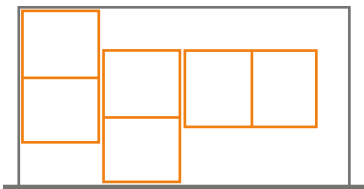
AMBIA-LINE for toys

- Cleaning up is child's play.
- The frames are designed to be flexible to accommodate a wide variety of storage needs.



AMBIA-LINE for clothes

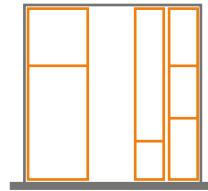
- Things can quickly be put away if you know where everything belongs.
- The clear view means that no matter what piece of clothing you are searching for, it can be found quickly.





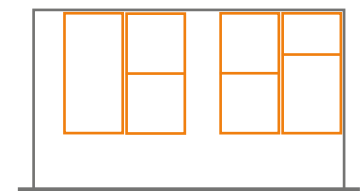
AMBIA-LINE for work essentials

- Beautifully organized interiors make it easier to focus on work.
- Calculators, scissors or other work tools are always within reach.



AMBIA-LINE for accessories

- These frames keep everything nice and organized, from ties to belts.
- Combine your perfect outfit in no time thanks to beautifully organized interiors.





AMBIA-LINE for LEGRABOX and MERIVOBX

Steel design



Orion gray (matte finish)

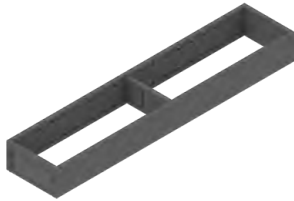
Configure your AMBIA-LINE

Use the Product Configurator to design your AMBIA-LINE application.

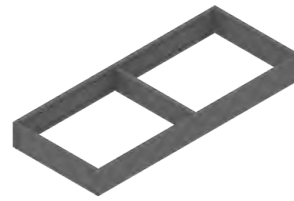


More about the Product Configurator:
www.blum.com/productconfigurator

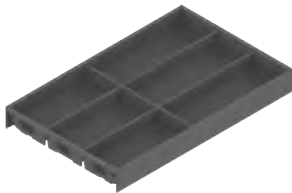
Sizes



Narrow frame
Width: **100** (3-15/16")
Lengths: **500/550** (20"/22")
Height: **51** (2")



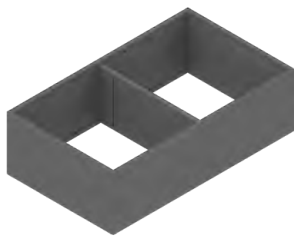
Wide frame
Width: **200** (7-7/8")
Lengths: **500/550** (20"/22")
Height: **51** (2")



Flatware insert
Width: **300** (11-13/16")
Lengths: **500/550** (20"/22")
Height: **51** (2")



Filler tray
Width: **100** (3-15/16")
Lengths: **300** (11-13/16")
Height: **51** (2")

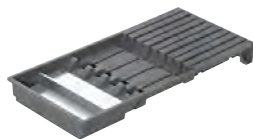


Deep drawer insert (long)
Width: **218** (8-9/16")
Length: **370** (14-9/16")
Height: **111** (4-3/8")

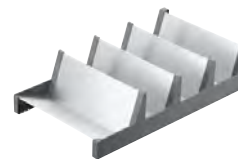


Cross gallery and lateral divider
For cutting to size to fit the right width

Kitchen accessories



Knife holder
Width: **187** (7-3/8")
Length: **409** (16-1/8")
For wide frames



Spice holder
Width: **205** (8-1/16")
Length: **356** (14")
For high frames (long)

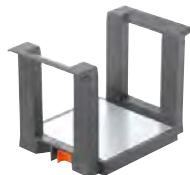
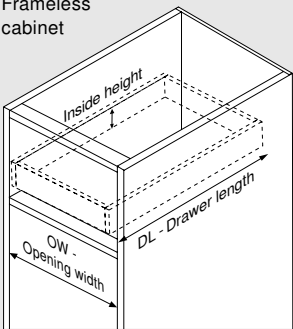


Plate holder
For plates with Ø **186** to **322**
(6-9/16" to 12-5/16")
Height **170** (6-11/16")

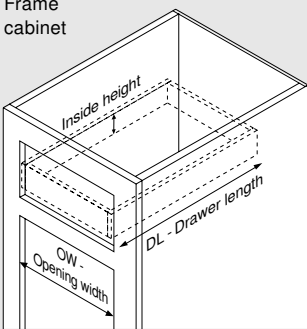
Flatware

Space requirement

Frameless cabinet



Frame cabinet





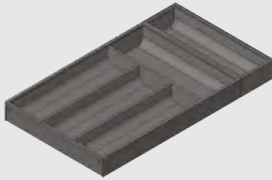
Flatware insert



— Coated with a soft touch, noise-dampening material

DL	Width	Height	Part no.
500 (20")	300 (11-13/16")	51 (2")	ZC7S500BS3

Flatware insert



— Coated with a soft touch, noise-dampening material

DL	Width	Height	Part no.
550 (22")	300 (11-13/16")	51 (2")	ZC7S550BS3

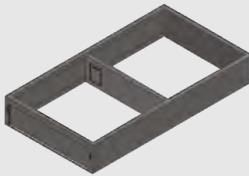
Utensils and odds and ends

Narrow drawer frame



DL	Width	Height	Part no.
500 (20")	100 (3-15/16")	51 (2")	ZC7S500RS1
550 (22")	100 (3-15/16")	51 (2")	ZC7S550RS1


Wide drawer frame



DL	Width	Height	Part no.
500 (20")	200 (7-7/8")	51 (2")	ZC7S500RS2
550 (22")	200 (7-7/8")	51 (2")	ZC7S550RS2



Cross divider



	Length	Height	Part no.
Narrow	88 (3-1/2")	45 (1-3/4")	ZC7Q010SS
Wide	188 (7-3/8")	45 (1-3/4")	ZC7Q020SS

i

To calculate total inside drawer width available:

LEGRABOX Opening width - 41 (1-5/8")

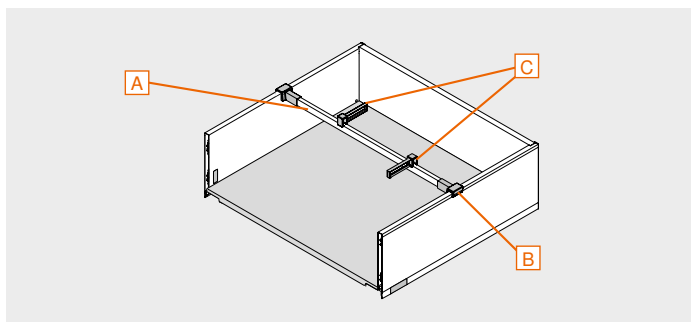
MERIVOBX Opening width - 56 (2-3/16")

See LEGRABOX brochure for actual length

NOTE:

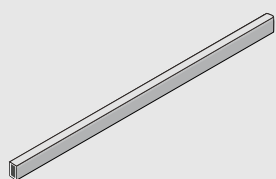
Some AMBIA-LINE products shown are special order.

Deep drawers



Cross gallery for cutting to size

A Cabinet widths 36-42"

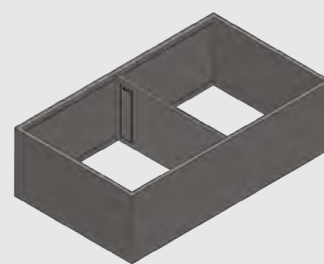


- LEGRABOX cut: OW - **90** (3-9/16")
- MERIVOBX cut: OW - **111** (4-3/8")
- Gray or brushed nickel
- Specify color when ordering

DL	LEGRABOX	MERIVOBX BOXCAP
1080 (42-1/2")	ZR7.1080U + 2 x ZC7U10E0 + 2 x ZC7U10F0	ZR4.1059U + 2 x ZC4U10E0 + 2 x ZC4U10F0

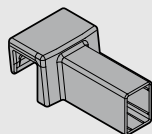
Deep drawer insert

- Includes adjustable cross divider (qty 1)
- Steel frame
- For C and F height drawers
- Magnetic back
- Non-slip rubber feet
- Order steel adapter plate separately



DL	Width	Height	Part no.
370 (14-9/16")	218 (8-9/16")	111 (4-3/8")	ZC7F400RSP

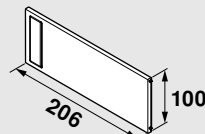
B Connector



- 2 required per cross rail set-up (order each separately)
- Gray

LEGRABOX	MERIVOBX BOXCAP
ZC7U10E0	ZC4U10E0

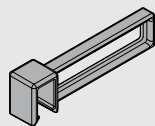
Cross divider



- For use with deep drawer insert

Length	Height	Part no.
206 (8-1/8")	100 (3-15/16")	ZC7Q0P0FS

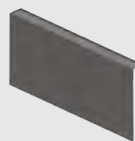
C Lateral divider



- Gray

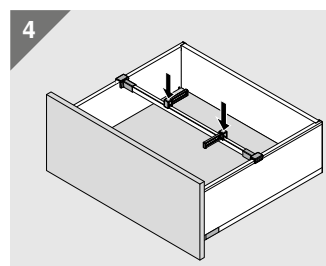
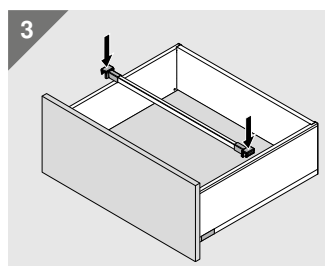
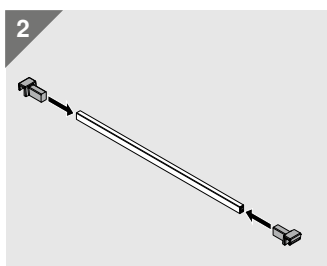
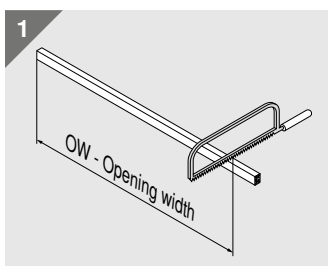
LEGRABOX	MERIVOBX BOXCAP
ZC7U10F0	ZC4U10F0

Adapter plate



- For C and F height drawers
- Connection to chipboard back

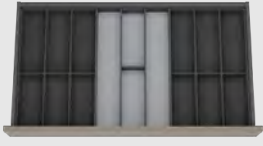
Height	Width	Part no.
218 (8-9/16")	148 (5-13/16")	ZC7A0P0C



Flatware

Cabinet widths 15-21"	
	
DL	Part no.
500 (20")	ZC7S500BS3
550 (22")	ZC7S550BS3

Cabinet widths 21-36"	
	
DL	Part no.
500 (20")	ZC7S500BS3 + ZC7S500RS1
550 (22")	ZC7S550BS3 + ZC7S550RS1

Cabinet widths 36-42"	
	
DL	Part no.
500 (20")	ZC7S500RS1 + 2x ZC7S500BS3
550 (22")	ZC7S550RS1 + 2x ZC7S550BS3

Odds and ends

Cabinet widths 12-15"	
	
DL	Part no.
500 (20")	ZC7S500RS2
550 (22")	ZC7S550RS2

Cabinet widths 15-33"	
	
DL	Part no.
500 (20")	ZC7S500RS1 + ZC7S500RS2
550 (22")	ZC7S550RS1 + ZC7S550RS2

Cabinet widths 33-42"	
	
DL	Part no.
500 (20")	2x ZC7S500RS1 + 2x ZC7S500RS2
550 (22")	2x ZC7S550RS1 + 2x ZC7S550RS2

i

To calculate total inside drawer width available:
LEGRABOX Opening width - **41** (1-5/8")
MERIVOBOX Opening width - **56** (2-3/16")
See LEGRABOX brochure for actual length

NOTE: Some AMBIA-LINE products shown are special order.



Cabinet widths 12-24"	
DL	Part no.
500 (20")	ZC7F400RSP
550 (22")	

Cabinet widths 24-36"	
DL	Part no.
500 (20")	2 x ZC7F400RSP
550 (22")	

Cabinet widths 36-42"	
DL	Part no.
350-650 (14-26")	ZR7.1080U + 2 x ZC7U10E0

Cross gallery rail for cutting to size

Cabinet widths 36-42"		
DL	LEGRABOX	MERIVOBX BOXCAP
350-650 (14-26")	ZR7.1080U + 2 x ZC7U10E0 + 2 x ZC7U10F0	ZR4.1059U + 2 x ZC4U10E0 + 2 x ZC4U10F0

i To calculate total inside drawer width available:
LEGRABOX Opening width - 41 (1-5/8")
MERIVOBX Opening width - 56 (2-3/16")
See LEGRABOX brochure for actual length
NOTE: Some AMBIA-LINE products shown are special order.

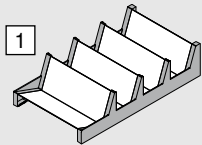




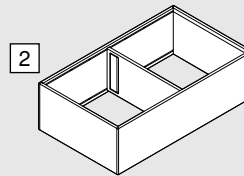
Small accessories, big impact

The beautifully designed AMBIA-LINE kitchen accessories are a perfect combination of form and function. Holders for knives, plates and spices keep kitchens nice and organized. Everything runs like clockwork because you have clear visibility of items in the drawer and everything is easily accessible.

Spice holder + deep drawer insert



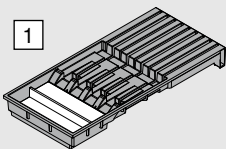
- Non-slip bottom
- High quality nylon and stainless steel
- Use with deep drawer insert



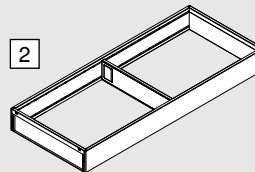
- Includes adjustable cross divider (qty 1)
- Steel frame
- For C and F height drawers
- Magnetic back
- Non-slip rubber feet
- Order steel adapter plate separately

	Length	Width	Height	Part no.
1	356 (14")	205 (8-1/16")	84 (3-5/16")	ZC7G0P0I
2	370 (14-9/16)	218 (8-9/16)	111 (4-3/8)	ZC7F400RSP

Knife holder + wide frame

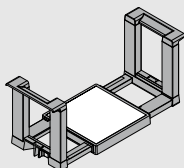


- Holds 9 knives
- High quality nylon and stainless steel
- Use with wide utensil insert



	Length	Width	Height	Part no.
1	409 (16-1/8")	187 (7-3/8")	43 (1-11/16")	ZC7M0200
2	500 (20")	200 (7-7/8")	51 (2")	ZC7S500RS2
	550 (22")	200 (7-7/8")	51 (2")	or ZC7S500RS2

Plate holder



- Holds up to 12 plates
- Non-slip bottom
- High quality nylon and stainless steel

For plates from	Overall width	Overall height	Part no.
167 to 312 (6-9/16" to 12-5/16") in diameter	247 to 392 (9-3/4" to 15-7/16")	170 (6-11/16")	ZC7T0350

- i** To calculate total inside drawer width available:
- LEGRABOX Opening width - 41 (1-5/8")
 - MERIVOBX Opening width - 56 (2-3/16")
 - TANDEMBOX Opening width - 84 (3-5/16")

NOTE: Some AMBIA-LINE products shown are special order.





ORGA-LINE

Overview of ORGA-LINE sets

ORGA-LINE is a versatile organization system, crafted with high-quality stainless steel trays and utensil dividers that fit snugly in drawers. Available for 21" TANDEM and MOVENTO drawers and in drawer lengths of 500 and 550 mm for TANDEMBOX, ORGA-LINE provides a tailored solution that combines functionality with a refined aesthetic. Combine systems for any drawer width for a tailored solution that maximizes drawer space, keeping everything neatly in place.



Removable trays

High-quality stainless steel trays keep flatware and other items nice and tidy. The trays can be removed individually and are dishwasher safe.

Adjustable utensil dividers

ORGA-LINE allows you to beautifully organize storage items of every shape and size. The utensil dividers can be positioned flexibly to suit your needs.

Individual sets

Combine different sets and tailor drawers to meet your specific needs.

Combo sets

These sets are a combination of utensil dividers and trays and are not only useful for kitchens, but for cabinets throughout the home.





Flexibility

ORGA-LINE containers, lateral and cross dividers can be flexibly arranged to suit storage items. Whatever the contents, ORGA-LINE cleans up drawers and allows you to make full use of the storage space available. The system can be adapted at any time to accommodate more items, such as pots or dinnerware.



Visibility

ORGA-LINE gives you clear visibility of contents and ensures that large items are held securely, delivering organization and easy access to every single item. And should guests want to help with the cooking, the right spice is easily accessible.



Cleanliness

Children's sticky fingers leave marks, but it's no problem with ORGA-LINE. The high-quality stainless steel trays can be easily cleaned without damaging the material. They're even designed for dishwasher use. That is Blum quality — for the lifetime of the cabinet.



Expandability

ORGA-LINE kitchen accessories make kitchen chores easier and organize interiors. The knife, spice and plate holders ensure that everything is exactly where it should be — whether it's in the kitchen or an outdoor gathering. And they can be quickly cleared away when you're done.

ORGA-LINE for MOVENTO and TANDEM

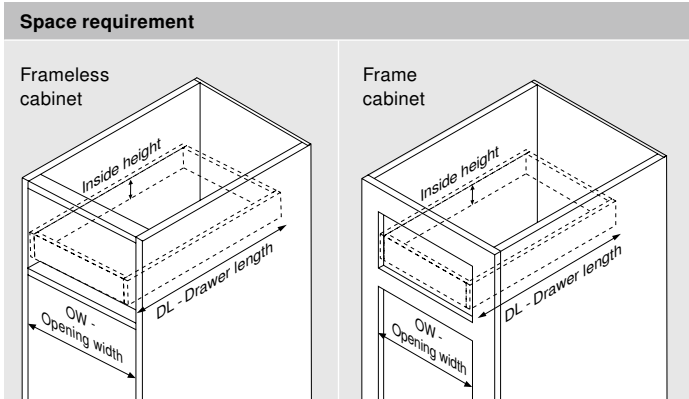
This adjustable organization solution for wood drawers is ideal for storing items in the kitchen and throughout the home.

The spring loaded tray and side rails ensure that each kit will fit into an inside drawer length from 19-1/4" to 20".

The removable trays are made of high quality nylon and stainless steel, and are dishwasher safe up to 170° F.



Flatware



Flatware			
DL	Width	Height	Part no.
533 (21")	285 (11-1/4")	66 (2-5/8")	ZHI.533BI3A

Flatware			
DL	Width	Height	Part no.
533 (21")	381 (15")	66 (2-5/8")	ZHI.533KI4A

Flatware			
DL	Width	Height	Part no.
533 (21")	399 to 417 (15-11/16" to 16-7/16")	66 (2-5/8")	ZHI.533TI4A

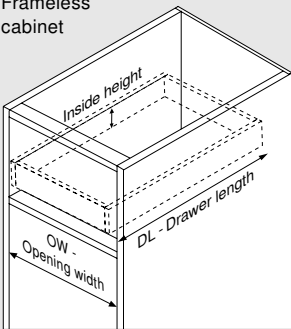
Flatware			
DL	Width	Height	Part no.
533 (21")	476 to 494 (18-3/4" to 19-7/16")	66 (2-5/8")	ZHI.533TI5A

i To calculate total inside drawer width available:
MOVENTO Opening width - 42 (1-21/32")
TANDEM 13-16 drawer side thickness: Opening width - 42 (1-21/32")
16-19 drawer side thickness: Opening width - 49 (1-15/16")

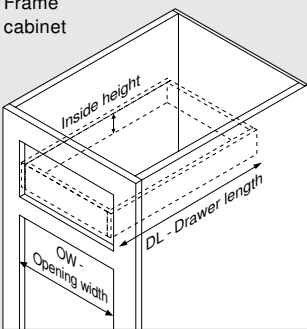
Utensils and odds and ends

Space requirement

Frameless cabinet

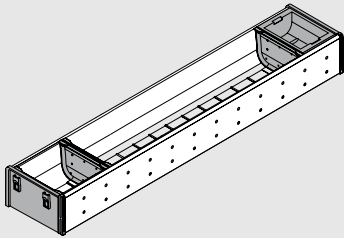


Frame cabinet



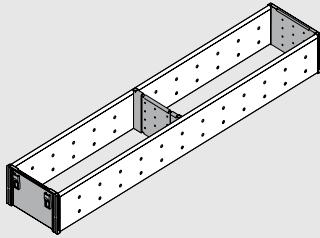


Odds and ends



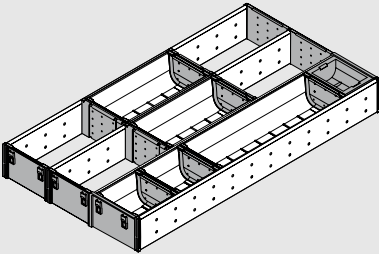
DL	Width	Height	Part no.
533 (21")	108 (4-1/4")	66 (2-5/8")	ZHI.533BI1A

Utensils



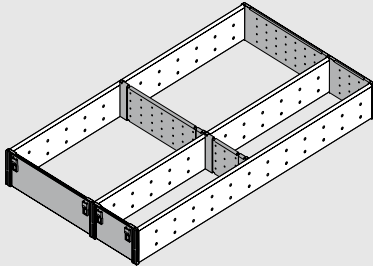
DL	Width	Height	Part no.
533 (21")	108 (4-1/4")	66 (2-5/8")	ZHI.533FI1A

Utensils




DL	Width	Height	Part no.
533 (21")	302 (11-7/8")	66 (2-5/8")	ZHI.533MI3A

Utensils



DL	Width	Height	Part no.
533 (21")	294 (11-9/16")	66 (2-5/8")	ZHI.533FI3A



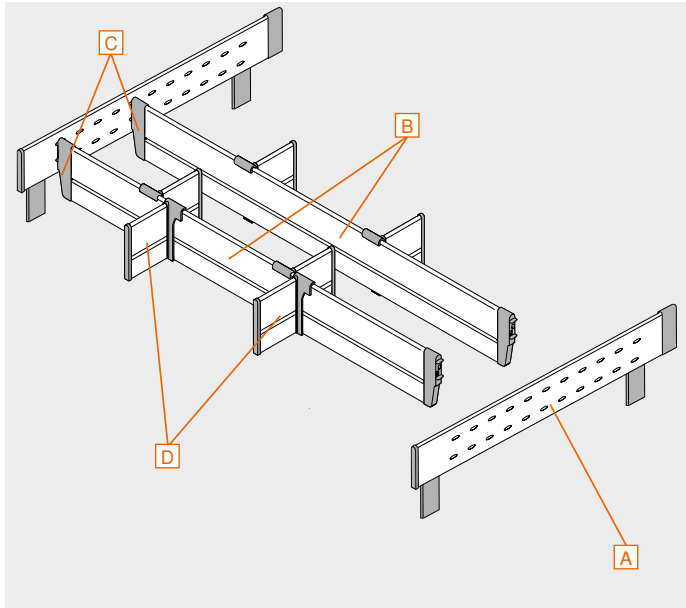
To calculate total inside drawer width available:

MOVENTO Opening width - 42 (1-21/32")

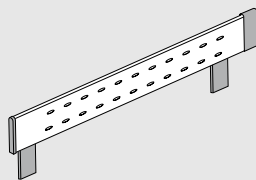
TANDEM 13-16 drawer side thickness: Opening width - 42 (1-21/32")

16-19 drawer side thickness: Opening width - 49 (1-15/16")

Deep drawers



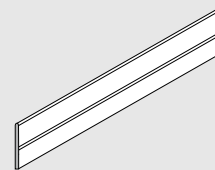
A Interior side rail



- Gray
- Two required

DL	Length	Height	Part no.
533 (21")	475 (18-11/16")	131 (5-3/16")	ZHI.533SS65

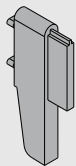
B Cross divider



- Gray
- Length is cut to size
- Inside drawer width minus 62 (2-7/16")

Length	Height	Part no.
1077 (42-3/8")	113 (4-1/2")	Z40H1077A

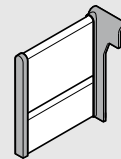
C Spring loaded connector



- Gray
- Two required

		Part no.
		Z40H000A

D Lateral divider



- Gray

Length	Height	Part no.
100 (3-15/16")	116 (4-9/16")	Z43H100S.01

- i** To calculate total inside drawer width available:
- MOVENTO** Opening width - 42 (1-21/32")
 - TANDEM** 13-16 drawer side thickness: Opening width - 42 (1-21/32")
 - 16-19 drawer side thickness: Opening width - 49 (1-15/16")

Flatware Sets

Cabinet widths 9-18"



DL	Part no.
533 (21")	ZHI.533BI1A

Cabinet widths 18-21"



DL	Part no.
533 (21")	ZHI.533BI3A

Cabinet width 21-30"



DL	Part no.
533 (21")	ZHI.533BI3A + ZHI.533BI1A

Cabinet widths 30-42"



DL	Part no.
533 (21")	2 x ZHI.533BI3A

Cabinet width ≥ 42"



DL	Part no.
533 (21")	3 x ZHI.533BI3A

Utensil divider sets

Cabinet widths 9-18"



DL	Part no.
533 (21")	ZHI.533FI1A

Cabinet widths 15-24"



DL	Part no.
533 (21")	ZHI.533FI3A

Cabinet widths 24-36"



DL	Part no.
533 (21")	ZHI.533FI1A + ZHI.533FI3A

Cabinet widths 36-42"



DL	Part no.
533 (21")	2x ZHI.533FI3A

Cabinet width ≥ 42"



DL	Part no.
533 (21")	2X ZHI.533FI3A + ZHI.533FI1A


i

To calculate total inside drawer width available:
 MOVENTO Opening width - 42 (1-21/32")
 TANDEM 13-16 drawer side thickness: Opening width - 42 (1-21/32")
 16-19 drawer side thickness: Opening width - 49 (1-15/16")

NOTE:

Please use Product Configurator for additional options.
 See pages 39, 40 and 41 for more detailed information.

Odds and ends sets

Cabinet widths 9-15"	
	
DL	Part no.
533 (21")	ZHI.533BI1A
Cabinet widths 15-18"	
	
DL	Part no.
533 (21")	ZHI.533FI1A + ZHI.533BI1A
Cabinet widths 18-21"	
	
DL	Part no.
533 (21")	ZHI.533BI3A
Cabinet widths 21-30"	
	
DL	Part no.
533 (21")	ZHI.533FI1A + ZHI.533BI3A
Cabinet widths 30-42"	
	
DL	Part no.
533 (21")	ZHI.533FI3A + ZHI.533BI3A
Cabinet widths ≥ 42"	
	
DL	Part no.
533 (21")	2 x ZHI.533BI3A + 1 x ZHI.533FI1A

- i** To calculate total inside drawer width available:
- MOVENTO** Opening width - **42** (1-21/32")
 - TANDEM 13-16** drawer side thickness: Opening width - **42** (1-21/32")
 - 16-19** drawer side thickness: Opening width - **49** (1-15/16")

NOTE: Please use Product Configurator for additional options.
See pages 39, 40 and 41 for more detailed information.

ORGA-LINE for TANDEMBOX

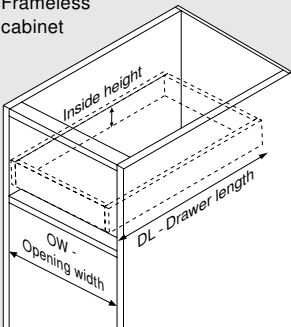




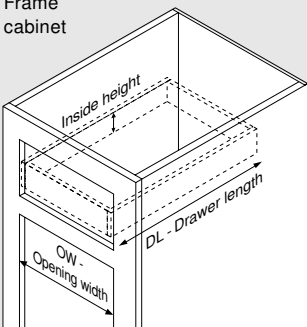
Order specifications

Space requirement

Frameless cabinet



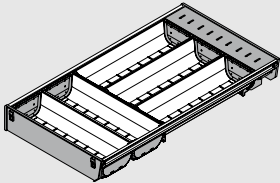
Frame cabinet





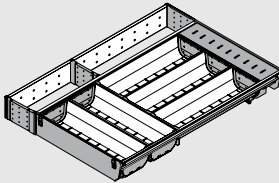
Flatware insert

Flatware insert



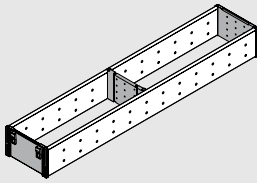
DL	Width	Height	Part no.
500 (20")	280 (11")	64 (2-1/2")	ZSI.500BI3A
550 (22")	280 (11")	64 (2-1/2")	ZSI.550BI3A

Flatware insert



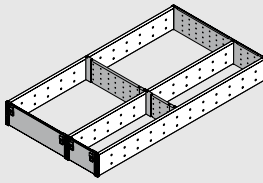
DL	Width	Height	Part no.
500 (20")	377 (14-13/16")	64 (2-1/2")	ZSI.500KI4A
550 (22")	377 (14-13/16")	64 (2-1/2")	ZSI.550KI4A

Utensils



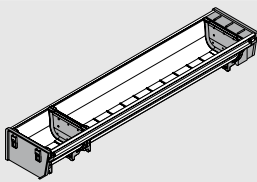
DL	Width	Height	Part no.
500 (20")	105 (4-1/8")	64 (2-1/2")	ZSI.500FI1
550 (22")	105 (4-1/8")	64 (2-1/2")	ZSI.550FI1

Utensils



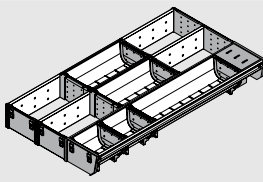
DL	Width	Height	Part no.
500 (20")	291 (11-7/16")	64 (2-1/2")	ZSI.500FI3
550 (22")	291 (11-7/16")	64 (2-1/2")	ZSI.550FI3

Odds and ends



DL	Width	Height	Part no.
500 (20")	103 (4-1/16")	64 mm (2-1/2")	ZSI.500BI1N
550 (22")	103 (4-1/16")	64 (2-1/2")	ZSI.550BI1N

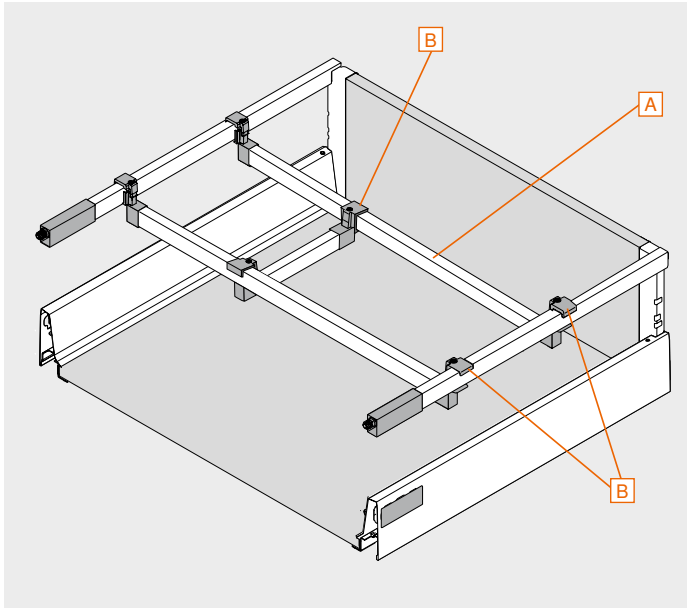
Odds and ends



DL	Width	Height	Part no.
500 (20")	297 (11-11/16")	64 (2-1/2")	ZSI.500MI3
550 (22")	297 (11-11/16")	64 (2-1/2")	ZSI.550MI3

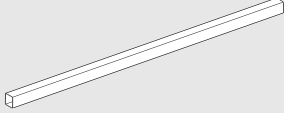
i To calculate total inside drawer width available:
 TANDEMBOX Opening width - 84 (3-5/16")
 See box system manual for actual length.

ORGA-LINE for B or D height TANDEMBOX with gallery rails



Cross gallery for cutting to size

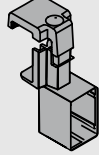
A Cross gallery rail divider



- Cabinet widths 36-42"
- Cut: OW - 63 (2-1/2")
- Available in gray

Length	Part no.
1118 (44-1/32")	ZRG.1118Q

B Cross gallery rail connector



- 2 required per cross rail set-up (order each separately)
- Light gray


Part no.
ZRU.01E0



i To calculate total inside drawer width available:
TANDEMBOX Opening width - 84 (3-5/16")
 See box system manual for actual length.


Container sets

Cabinet widths 9-18"



DL	Part no.
500 (20")	ZSI.500BI1N
550 (22")	ZSI.550BI1N

Cabinet widths 18-21"



DL	Part no.
500 (20")	ZSI.500BI3A
550 (22")	ZSI.550BI3A

Cabinet widths 21-24"



DL	Part no.
500 (20")	ZSI.500KI4A
550 (22")	ZSI.550KI4A

Cabinet widths 24-27"




DL	Part no.
500 (20")	ZSI.500BI1N + ZSI.500BI3A
550 (22")	ZSI.550BI1N + ZSI.550BI3A

Cabinet widths 27-33"



DL	Part no.
500 (20")	ZSI.500BI1N + ZSI.500KI4A
550 (22")	ZSI.550BI1N + ZSI.550KI4A

Cabinet widths 33-36"




DL	Part no.
500 (20")	2 x ZSI.500BI3A
550 (22")	2 x ZSI.550BI3A

Cabinet widths 36-42"



DL	Part no.
500 (20")	2 x ZSI.500BI3A + 1 x ZSI.500KI4A
550 (22")	2 x ZSI.550BI3A + 1 x ZSI.550KI4A

Cabinet widths ≥ 42"



DL	Part no.
500 (20")	2 x ZSI.500KI4A
550 (22")	2 x ZSI.550KI4A

i

To calculate total inside drawer width available:
 TANDEMBOX Opening width - 84 (3-5/16")
 See box system manual for actual length.

Utensil divider sets


Cabinet widths 9-18"	
	
DL	Part no.
500 (20")	ZSI.500FI1
550 (22")	ZSI.550FI1

Cabinet widths 18-21"	
	
DL	Part no.
500 (20")	ZSI.500FI3
550 (22")	ZSI.550FI3

Cabinet widths 21-33"	
	
DL	Part no.
500 (20")	ZSI.500FI1 + ZSI.500FI3
550 (22")	ZSI.550FI1 + ZSI.550FI3


Cabinet widths 33-39"	
	
DL	Part no.
500 (20")	2 x ZSI.500FI3
550 (22")	2 x ZSI.550FI3

Cabinet widths 39-45"	
	
DL	Part no.
500 (20")	1 x ZSI.500FI1 + 2 x ZSI.500FI3
550 (22")	1 x ZSI.550FI1 + 2 x ZSI.550FI3

Cabinet widths ≥ 45"	
	
DL	Part no.
500 (20")	3 x ZSI.500FI3
550 (22")	3 x ZSI.550FI3

Odds and ends sets

Cabinet widths 9-18"	
	
DL	Part no.
500 (20")	ZSI.500BI1N
550 (22")	ZSI.550BI1N

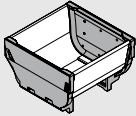
Cabinet widths 18-24"	
	
DL	Part no.
500 (20")	ZSI.500BI3A
550 (22")	ZSI.550 BI3A

Cabinet widths 24-30"	
	
DL	Part no.
500 (20")	ZSI.500BI1N + ZSI.500BI3A
550 (22")	ZSI.550BI1N + ZSI.500 BI3A

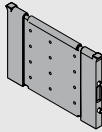
Cabinet widths 30 ≥ 36"	
	
DL	Part no.
500 (20")	ZSI.500 BI3A + ZSI.500FI3
550 (22")	ZSI.550 BI3A + ZSI.550FI3

i To calculate total inside drawer width available:
TANDEMBOX Opening width - 84 (3-5/16")
 See box system manual for actual length.

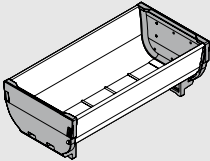
Utensils and odds and ends

ORGA-LINE single tray
 

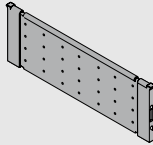
Length	Width	Height	Part no.
88 (3-7/16")	88 (3-7/16")	61 (2-3/8")	ZSI.010SI

ORGA-LINE single cross divider
 

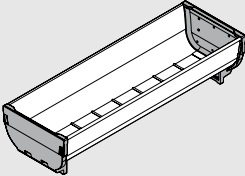
Length	Height	Part no.
90 (3-9/16")	64 (2-1/2")	ZSI.010Q

ORGA-LINE double tray
 

Length	Width	Height	Part no.
176 (7")	88 (3-7/16")	61 (2-3/8")	ZSI.020SI

ORGA-LINE double cross divider
 

Length	Height	Part no.
179 (7-1/16")	64 (2-1/2")	ZSI.020Q

ORGA-LINE triple tray
 

Length	Width	Height	Part no.
264 (10-13/32")	88 (3-7/16")	61 (2-3/8")	ZSI.030SI

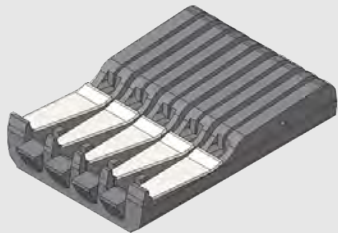




Kitchen accessories

ORGA-LINE kitchen accessories simplify many tasks and provide organization. With the knife, spice and plate holders, everything is within easy reach, exactly where it's needed — whether in the kitchen or at an outdoor barbecue.

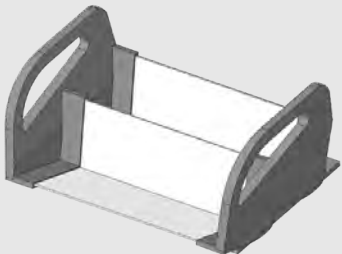
ORGA-LINE knife holder



- Holds up to 9 knives of different sizes
- High quality nylon and stainless steel
- Dishwasher safe up to 170° F
- Handle supports (qty 4)

Length	Width	Height	Part no.
282 (11-1/8")	178 (7")	56 (2-3/16")	ZSZ.02M0

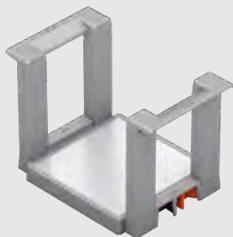
ORGA-LINE spice tray



- Easy removal from drawer
- High quality nylon and stainless steel
- Set includes two trays and four feet
- Spice trays can nest
- When combining multiple spice trays subtract **16 (5/8")** in length for each additional tray for total length front to back

Length	Width	Inside storage width	Height	Part no.
173 (6-13/16")	282 (11-1/8")	248 (9-3/4")	121 (4-3/4")	ZFZ.38G0I

Plate holder



- Holds up to 12 plates
- Non-slip bottom
- High quality nylon and stainless steel

For plates from	Overall width	Overall height	Part no.
167 to 312 (6-9/16" to 12-5/16") in diameter	247 to 392 (9-3/4" to 15-7/16")	170 (6-11/16")	ZC7T0350

Real people, real solutions

Everything we do at Blum revolves around the desire to create a better experience for kitchen users. For more than 20 years, we have been researching the habits and lifestyles of homeowners around the globe. We pay attention to how users move in their kitchens and where they store their items. We pour that research into our products, considering function, quality and sustainability.

Kitchen observations

We observe kitchens through the use of video cameras and questionnaires. A close look at everyday use reveals important insights and inspiration for new products.



AgeExplorer® suit

Drawers that open easily and close silently make kitchens more user-friendly. At Blum, we achieve this with advanced technology.



Put your kitchen to work

Easy opening and silent, effortless closing in drawers increase usability in the kitchen. At Blum, this is achieved with state-of-the-art technology.





A warm, sunlit kitchen with a man in a striped shirt cooking at a large island. A young girl with blonde hair sits on a black stool, looking at him. The island has a wooden countertop and a pull-out drawer filled with jars. In the background, a dining table with a blue chair and framed art is visible. Large windows and a glass door lead to a balcony with plants. The floor is made of light-colored wood in a herringbone pattern.

moving ideas

At Blum, we pay attention to those small, but valuable, details. We're attentive in everything we do. With our carefully engineered hardware, innovative motion technologies and customized services, we help move your ideas forward. Let's move the world together.



Quality of living

We engineer our products with your lifetime in mind. As your mobility needs change, Blum hardware keeps your cabinets accessible.



Product range

Everything from a single source: Our wide range of products allows you to keep up with the trends of today and tomorrow.



Inspiration

We monitor global trends and strive to create the solutions of tomorrow. We like to share our insights with you.



Innovation

We stay in motion. Our curiosity and pioneering spirit drive us to develop new products and services for you.



Services

We support your daily operations with customized services tailored to your processes.



Quality

We continuously strive to improve our products, services and ourselves.



Trust

It's our goal to build lasting relationships with our customers, employees and in our community.

Julius Blum started our journey in 1952 with horseshoe studs. Today we supply innovative hardware to customers in over 120 countries.

Please visit blum.com for information on other Blum products
LIT.ORG1000.12.24 Ident. 26308510 © 2024 Blum, Inc.

Blum, Inc.
7733 Old Plank Rd.
Stanley, NC 28164
800-438-6788
blum.com

