

2026

New Products

 **REV-A-SHELF**
Innovation through Organization™

tresco
lighting



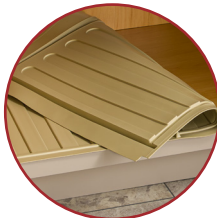
New Product
Winter 2026
Rev-A-Shelf®

Flexible Drip Tray

**New Finishes.
Same Smart Protection.**

Water damage never gives a warning but our SBDTF & SBVDTF Series Drip Trays are ready when it happens. Designed to be your cabinet's first line of defense, these low-profile, flexible trays install easily, even in tight spaces and help stop small leaks from becoming big problems. Each tray holds up to 2.2 qts., channeling water safely out where it can be seen, while resisting everyday household chemicals and cleaning up in seconds. The trimmable design ensures a perfect fit every time.

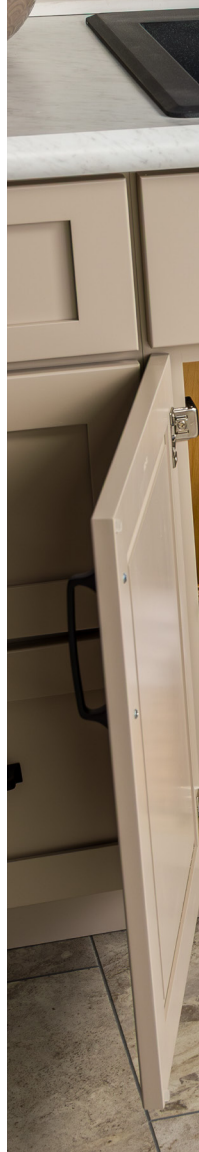
Now available in almond and white, the SBDTF and SBVDTF Series fit 30", 36" and 42" sink bases and 24", 30" and 36" vanity cabinets respectively, making smart protection easy to specify. Because peace of mind should come standard under every sink.



Almond Finish



White Finish





New Design
Winter 2026
Rev-A-Shelf®

35/50 qt. Lid

One Lid.
Total Convenience.

Our Bi-Directional Lids deliver flexible access designed to adapt to any cabinet configuration. Each lid opens front-to-back or side-to-side, with a tool-free adjustment that makes switching orientations fast and effortless. Available in all of our waste container colors, these lids are engineered to fit both our 35 qt. containers and the newly designed 50 qt. waste containers providing consistent style, seamless compatibility and everyday convenience.



35/50 qt. Bin

Expanded Compatibility.
Streamlined Design.

The new 50 qt. waste bin shares the same profile and lid compatibility as our 35 qt. design, now allowing for use in 18" full-height cabinets. Durable, easy to clean and proudly made in the USA, it delivers smarter storage.



REV-A-SHELF
Innovation through Organization™

Craftsman Collection

The Luxury You Love,
Now in Walnut.

New for 2026, the Craftsman Collection introduces a rich walnut finish, joining the classic maple option to bring warmth, depth and sophistication to any space. Thoughtfully engineered and beautifully crafted, each piece blends durable construction with elevated design. From seamless organization to striking visual impact, the Craftsman Collection transforms cabinets into a statement of intentional design; where form and function work in perfect harmony.



Now a Rev-A-Shelf® Brand

Innovashelf

Trusted Strength,
Now Available from Rev-A-Shelf®

The complete Innovashelf® system is now available from Rev-A-Shelf®, delivering the same clean design, flexible installation and seamless compatibility.



New Product
Winter 2026
Tresco®

Controllers

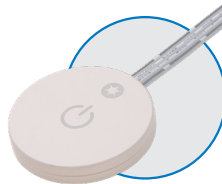
The Control You Trust.
Reimagined for Today.

The newly redesigned PowerSync Wired Controllers deliver the same trusted performance with a cleaner, more modern design reimagined for today's space. Built to work seamlessly with Tresco® PowerSync power supplies and LED lighting, they offer intuitive control for everything from accent lighting to full task illumination.

With seven controller options including touch, motion, and door-activated styles, PowerSync makes lighting effortless. Available in finishes from white and/or nickel, these controllers offer clean integration and reliable performance that responds naturally to how spaces are used.



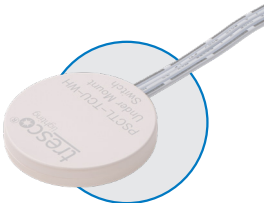
L-PSCTL-TDS-NI-1
Side Mount



L-PSCTL-TCS-WH-1
Surface Mount

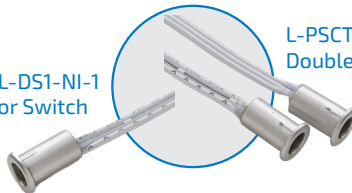


L-PSCTL-TDR-NI-1
Round Recessed

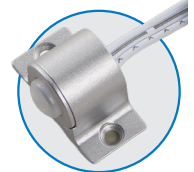


L-PSCTL-TCU-WH-1
Undermount Switch

L-P-PSCTL-DS1-NI-1
Single Door Switch



L-PSCTL-DS2-NI-1
Double Door Switch



L-PSCTL-MOT-NI-1
Motion Sensor (PIR)



tresco[®]
lighting

New Design
Winter 2026
Tresco®

COB Flextape®



Seamless Light.
No Diffuser Needed.

COB FlexTape® delivers the next evolution in LED tape lighting. Featuring high-density Chip on Board technology, this 24V flexible strip provides a smooth, continuous glow with no visible hotspots; no diffusers required.

Available in two color options and 20-foot rolls, COB FlexTape® offers virtually limitless cut points for precise customization, making it easy to achieve clean, professional lighting in any application.

Fineline3.0

Precision Light.
Virtually Invisible.



Slim, powerful, and beautifully precise—FineLine® 3.0 delivers high-performance lighting in an ultra-low-profile design. At just 10 mm, it disappears into cabinetry while providing smooth, even illumination through advanced Luniform™ technology.

With selectable white tuning, FineLine® 3.0 lets you shift from warm, wood-enhancing tones to crisp, clean light—perfect for cabinets, displays, accents, and task lighting.

tresco
lighting



Lighting Configurator

Try our Lighting Product Configurator, a new service that guides you through creating a custom parts list tailored to your unique project.

(trescolighting.com/productconfigurator).



Easy Cabinet Lighting

Tresco® Cabinet-Sized LED Linear Light Kits take the guesswork out of cabinet lighting. One perfectly sized light per cabinet delivers smooth, even illumination with no dark spots.



tresco[®]
lighting



Scan for more information
on our 2026 New Products!



rev-a-shelf.com | 800-626-1126



NPBKBS2026